

# Travel information

## Conference Location

The conference location is Salme Kultuurikeskus

Salme Kultuurikeskus  
Salme tn 12  
Tallinn 10413

You can take tram 1 or 2 Direction Kopli from almost everywhere. Get off at the stop “Salme”. Or you can take bus 3 and get off at stop “Kungla”.

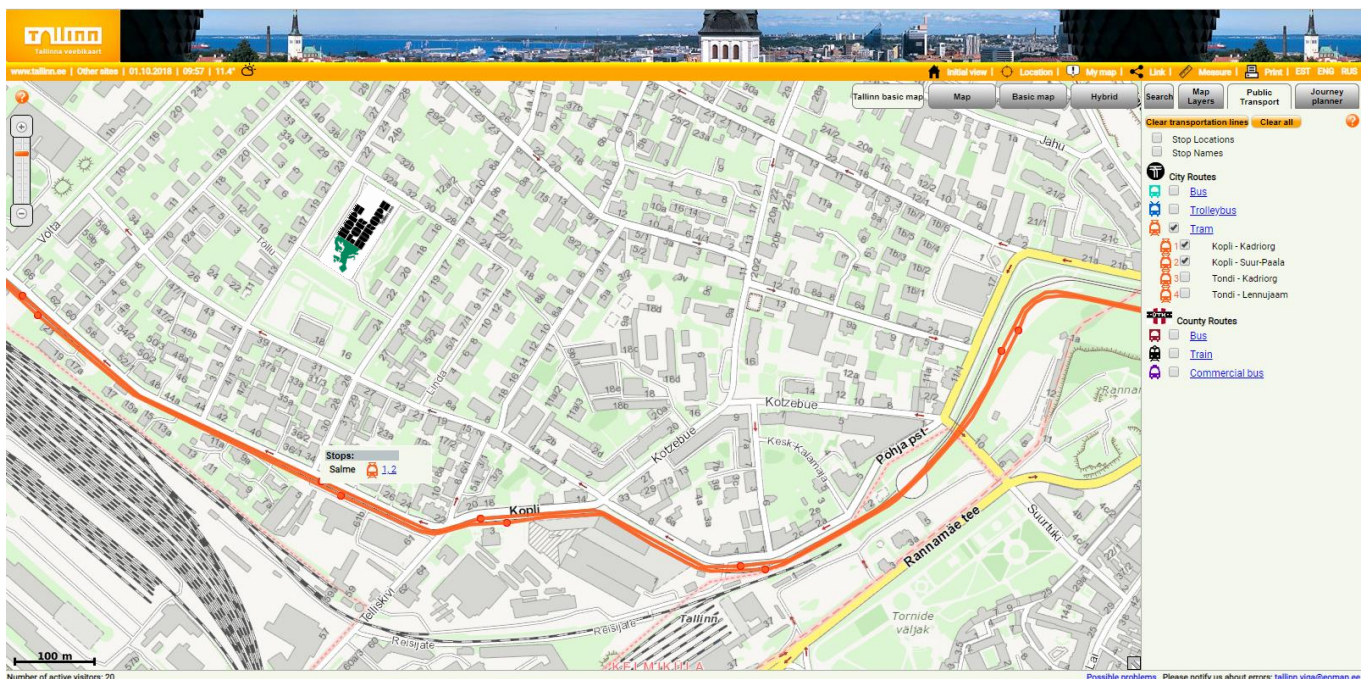
### Tallinn Public Transport Tickets

We advise to buy a 5 day travel card (or for as many days as you need). Cards can be bought at kiosks, post office and more. The 5 day card costs €6,-.

<https://www.tallinn.ee/eng/pilet/Ticket-information-for-tourists>

This is the Tallinn map with the location of our Conference centre. If you need to check it online type Salme in the search box:

<http://kaart.tallinn.ee/Tallinn/Show?REQUEST=Main&lang=eng&WIDTH=1600&HEIGHT=796>



### Wheelchair access

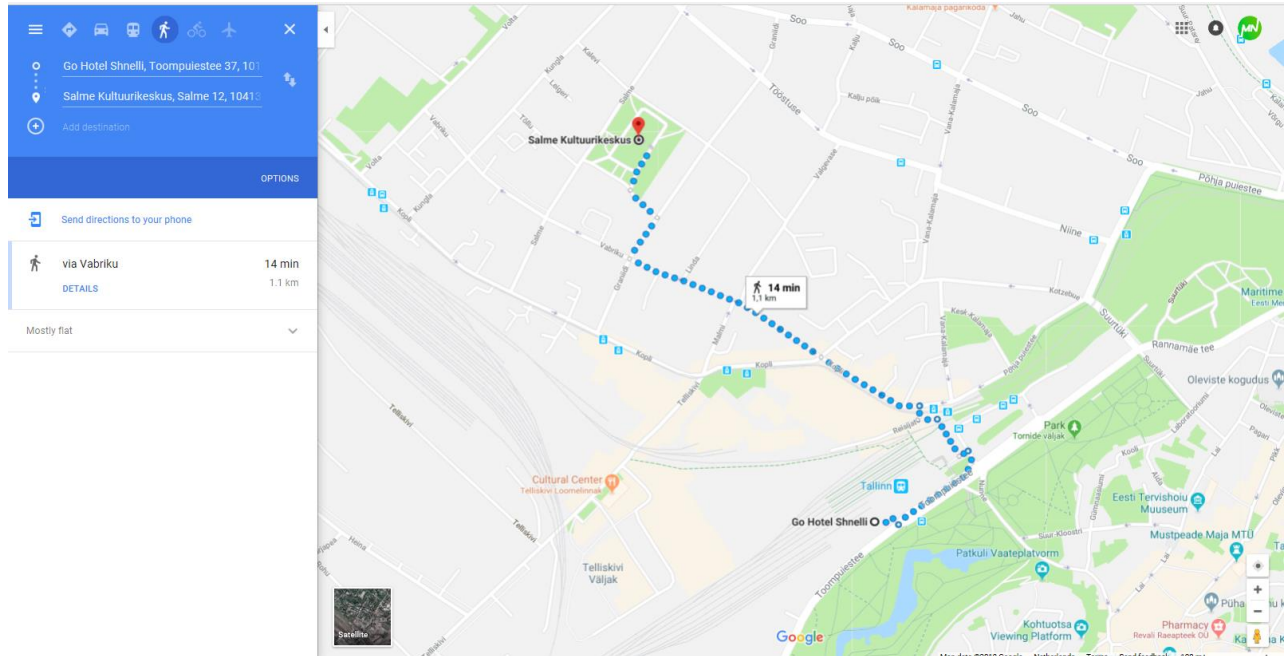
A wheelchair user accesses the cultural centre from the right side door, next to which are two labelled sites. If you want to enter the building, let us know by pressing the door phone button or by calling 641 6425. When you enter the side door, the lift truck will bring you to the 1st floor, where you will find the lobby, and the handicapped toilet. The building has a wheelchair access to all floors.

# Travel information from the hotels to Salme

## Go Hotel Schnell <http://go-hotel-shnelli.hotelintallinn.com/en/>

Address: Toompuiestee 37, 10133 Tallinn, Estonia

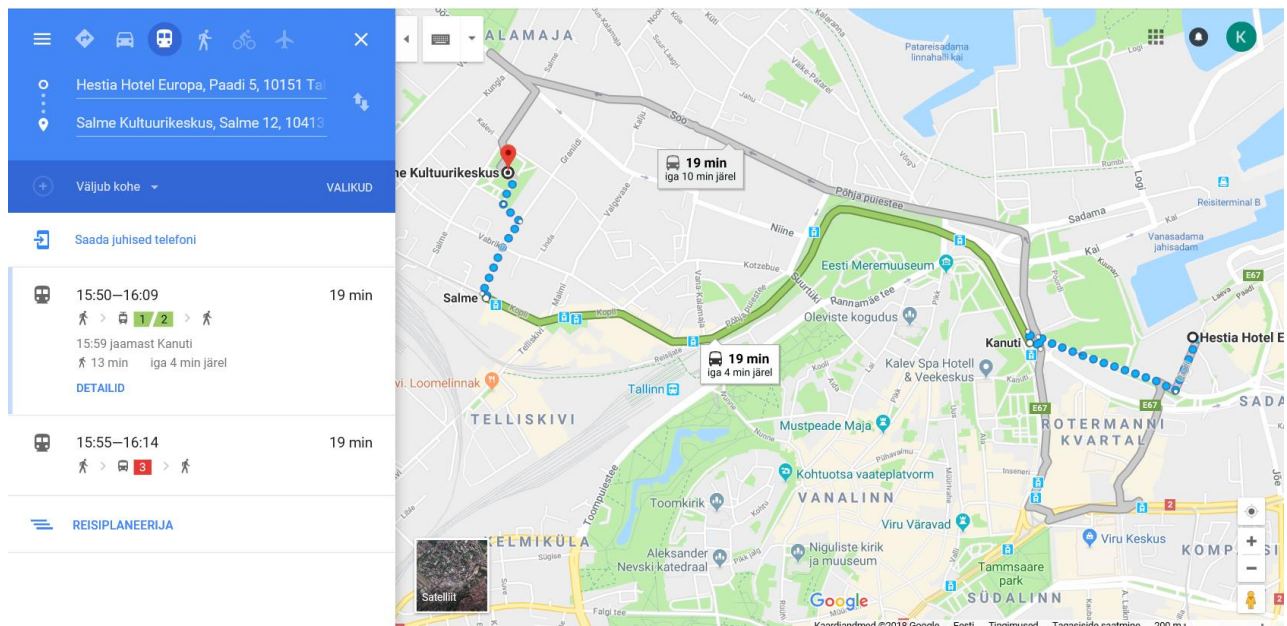
- The best way is to go by foot – travel time 15 min



## Hestia Hotel Europa <https://www.hestiahotelgroup.com/europa/en/>

Address: Paadi 5, 10151 Tallinn, Estonia

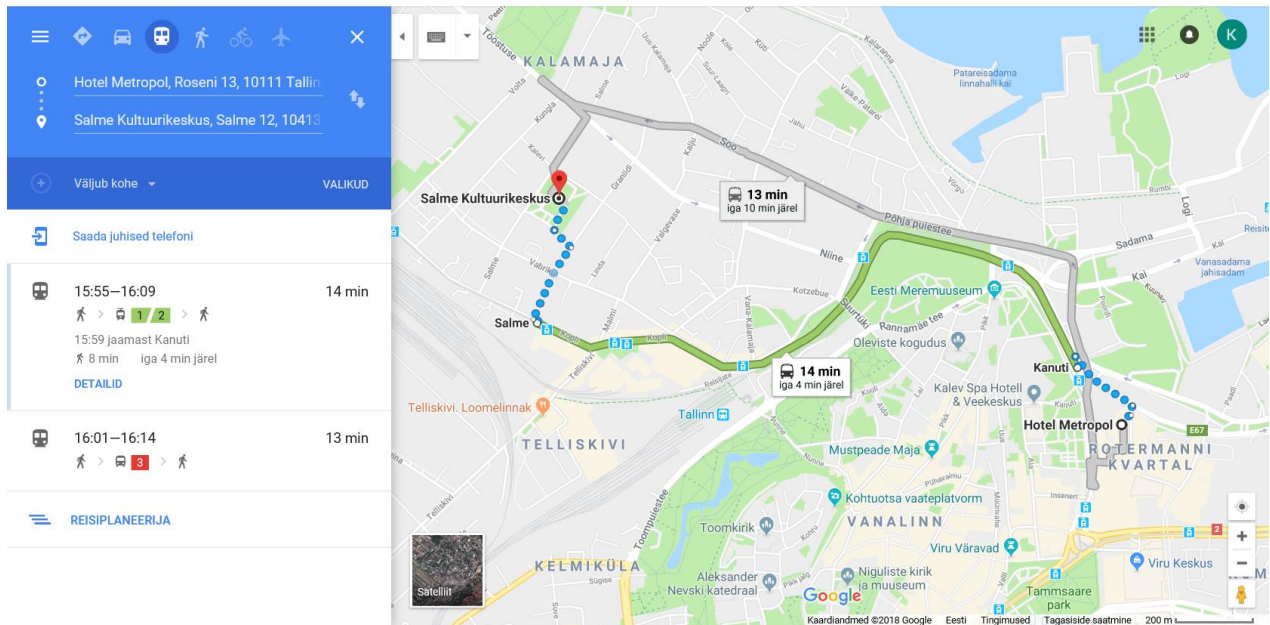
- Take tram 1 or 2 – get off at stop “Salme”, travel time 20 minutes
- By foot - travel time 30 minutes



## Hotel Metropol <http://www.metropol.ee/hotel/>

Address: Roseni 13, 10111 Tallinn, Estonia

- Tram 1 or 2, get off at “Salme” – travel time 15 minutes
- Bus 3, get off at stop “Kungla” – travel time 15 minutes
- By foot – travel time 30 minutes



## Fat Margaret`s hostel <http://16eur.ee/fat-margarets/>

Address: Põhja puiestee 27, 10415 Tallinn, Estonia

- Tram 1 or 2, get off at “Salme” – travel time 12min
- By bus no 3 + walk it takes 13 min – travel time 10 min
- By foot – travel time 15 min

